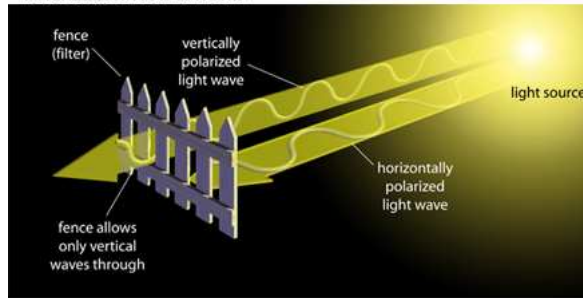
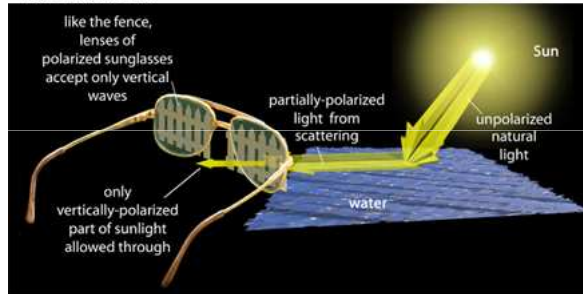


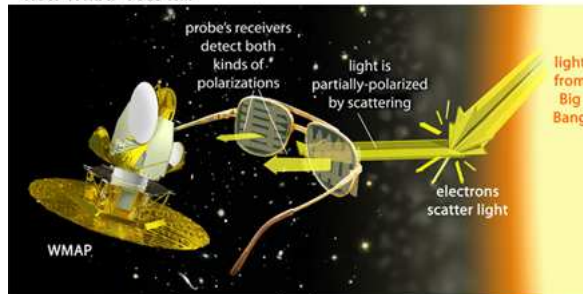
### Polarization: How It Works

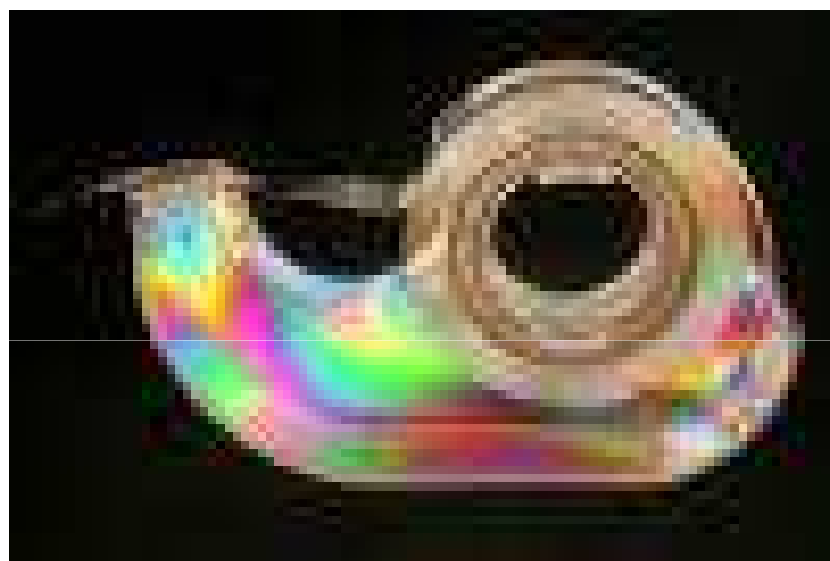


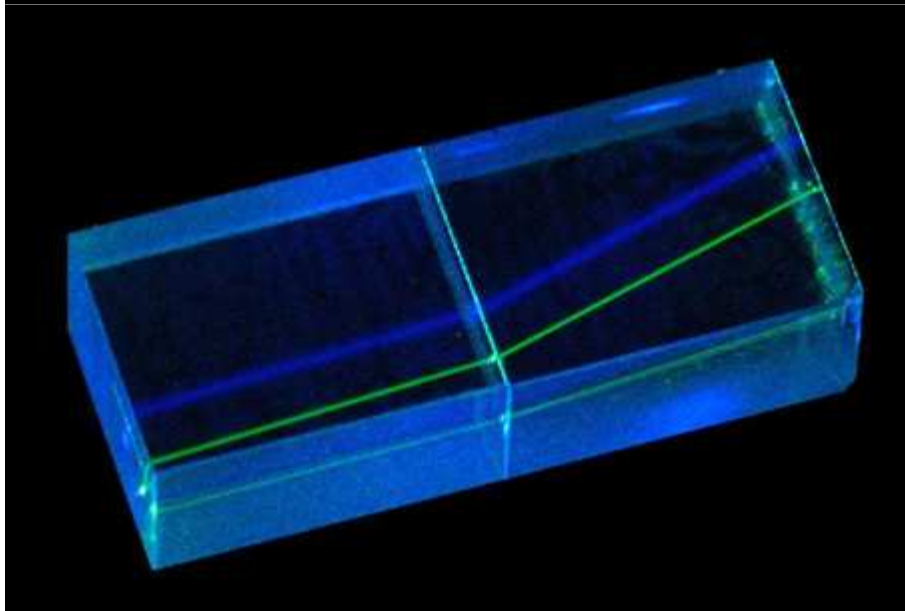
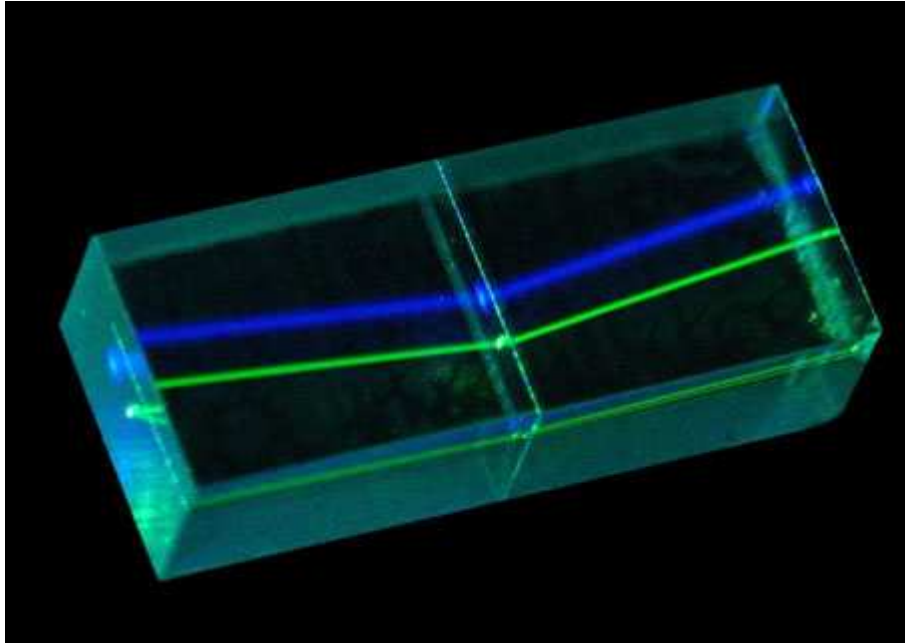
### how we see it...



### how WMAP sees it...











he sun in the photo below apparently frames the northern [tower of the Golden Gate Bridge](#) in a perfect circle. In fact, there are apparently three "suns" in the photo. One sun is real, two of them are optical artifacts. The fake suns, including the perfect one framing the Golden Gate tower are caused by an optical phenomenon called *double refraction*. Double refraction is also called *birefringence*

[Solar glory](#) at the [steam](#) from [hot springs](#) at [Yellowstone National Park](#). A **glory** is an optical phenomenon produced by light backscattered (a combination of [diffraction](#), [reflection](#) and **refraction**) towards its source by a cloud of uniformly-sized water droplets.

